



# GluR- $\delta$ 1 Polyclonal Antibody

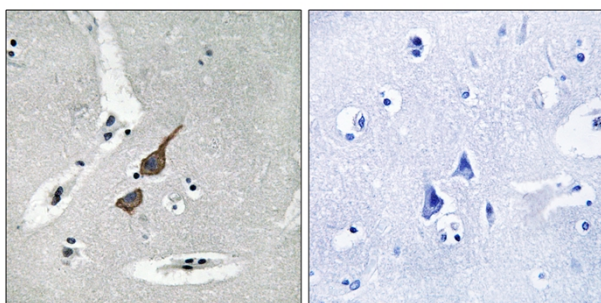
<b>Catalog No</b>	YP-Ab-16426
<b>Isotype</b>	IgG
<b>Reactivity</b>	Human;Mouse;Rat
<b>Applications</b>	WB;IHC;IF;ELISA
<b>Gene Name</b>	GRID1
<b>Protein Name</b>	Glutamate receptor delta-1 subunit
<b>Immunogen</b>	The antiserum was produced against synthesized peptide derived from human GRID1. AA range:831-880
<b>Specificity</b>	GluR- $\delta$ 1 Polyclonal Antibody detects endogenous levels of GluR- $\delta$ 1 protein.
<b>Formulation</b>	Liquid in PBS containing 50% glycerol, 0.5% BSA and 0.02% sodium azide.
<b>Source</b>	Polyclonal, Rabbit,IgG
<b>Purification</b>	The antibody was affinity-purified from rabbit antiserum by affinity-chromatography using epitope-specific immunogen.
<b>Dilution</b>	WB: 1/500 - 1/2000. IHC: 1/100 - 1/300. ELISA: 1/40000.. IF 1:50-200
<b>Concentration</b>	1 mg/ml
<b>Purity</b>	$\geq 90\%$
<b>Storage Stability</b>	-20°C/1 year
<b>Synonyms</b>	GRID1; KIAA1220; Glutamate receptor delta-1 subunit; GluR delta-1 subunit
<b>Observed Band</b>	95kD
<b>Cell Pathway</b>	Cell membrane ; Multi-pass membrane protein . Cell junction, synapse, postsynaptic cell membrane ; Multi-pass membrane protein .
<b>Tissue Specificity</b>	Brain,Uterus,
<b>Function</b>	function:Receptor for glutamate. L-glutamate acts as an excitatory neurotransmitter at many synapses in the central nervous system. The postsynaptic actions of Glu are mediated by a variety of receptors that are named according to their selective agonists.,similarity:Belongs to the glutamate-gated ion channel (TC 1.A.10) family.,
<b>Background</b>	This gene encodes a subunit of glutamate receptor channels. These channels mediate most of the fast excitatory synaptic transmission in the central nervous system and play key roles in synaptic plasticity.[provided by RefSeq, Jan 2009],
<b>matters needing attention</b>	Avoid repeated freezing and thawing!



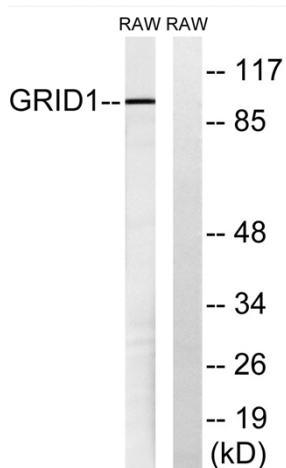
## Usage suggestions

This product can be used in immunological reaction related experiments. For more information, please consult technical personnel.

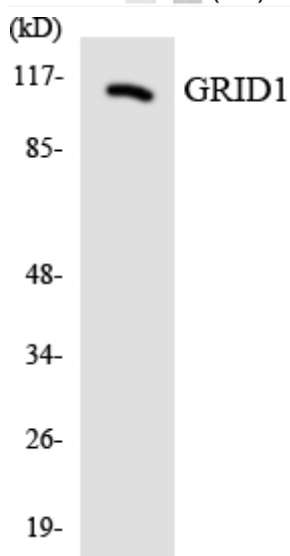
## Products Images



Immunohistochemistry analysis of paraffin-embedded human brain tissue, using GRID1 Antibody. The picture on the right is blocked with the synthesized peptide.



Western blot analysis of lysates from RAW264.7 cells, using GRID1 Antibody. The lane on the right is blocked with the synthesized peptide.



Western blot analysis of the lysates from RAW264.7 cells using GRID1 antibody.